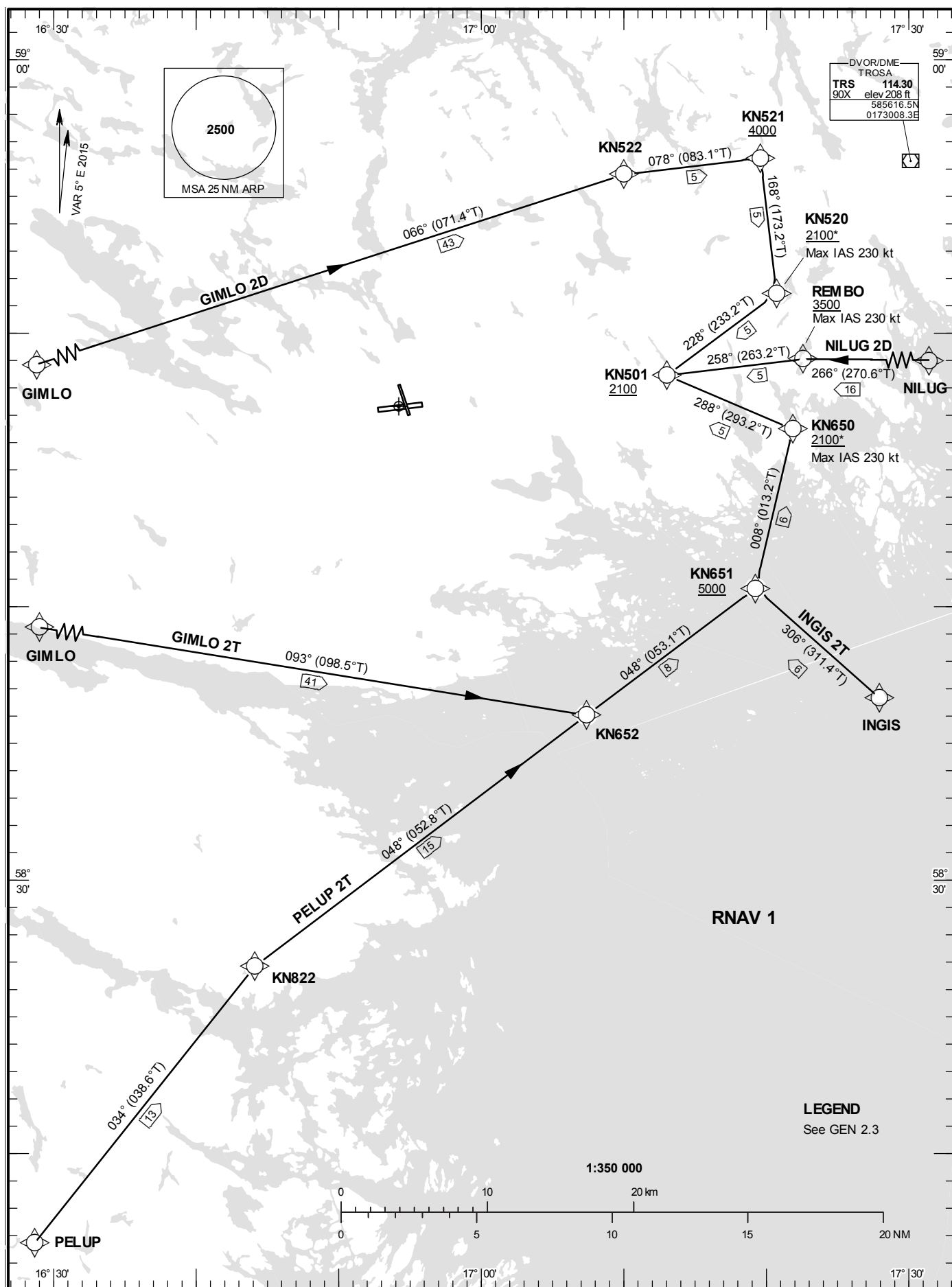


STOCKHOLM/Skavsta
RNAV (GNSS) STAR RWY 26

**STANDARD INSTRUMENT
ARRIVAL CHART (STAR) -
ICAO**

HGT and ALT in ft
BRG are MAG (True)
TA 5000 ft AMSL

SKAVSTA TOWER	127.705
ÖSTGÖTA APPROACH	132.955



CHANGE: Editorial

STOCKHOLM/Skavsta**Prescribed Coding of RNAV STAR for RWY 26****GIMLO 2D**

Path Desc	Waypoint Identifier	Fly-over	Course °M(°T)	Dist (NM)	Turn Dir	Altitude	Speed	VPA/RDH	Rec Navaid	Navigation Specification
IF	GIMLO	-	-	-	-	-	-	-	-	RNAV 1
TF	KN522	-	066°(071.4°)	43.4	-	-	-	-	-	RNAV 1
TF	KN521	-	078°(083.1°)	5.0	-	+4000	-	-	-	RNAV 1
TF	KN520	-	168°(173.2°)	5.0	-	+2100	-230	-	-	RNAV 1
TF	KN501	-	228°(233.2°)	5.0	-	+2100	-	-	-	RNAV 1

STAR instruction: GIMLO – KN522 – KN521 (4000 ft or above) – KN520 (max IAS 230 kt, 2100 ft or above) – KN501 (2100 ft or above)

GIMLO 2T

Path Desc	Waypoint Identifier	Fly-over	Course °M(°T)	Dist (NM)	Turn Dir	Altitude	Speed	VPA/RDH	Rec Navaid	Navigation Specification
IF	GIMLO	-	-	-	-	-	-	-	-	RNAV 1
TF	KN652	-	093°(098.5°)	40.6	-	-	-	-	-	RNAV 1
TF	KN651	-	048°(053.1°)	7.7	-	+5000	-	-	-	RNAV 1
TF	KN650	-	008°(013.2°)	6.0	-	+2100	-230	-	-	RNAV 1
TF	KN501	-	288°(293.2°)	5.0	-	+2100	-	-	-	RNAV 1

STAR instruction: GIMLO – KN652 – KN651 (5000 ft or above) – KN650 (max IAS 230 kt, 2100 ft or above) – KN501 (2100 ft or above)

INGIS 2T

Path Desc	Waypoint Identifier	Fly-over	Course °M(°T)	Dist (NM)	Turn Dir	Altitude	Speed	VPA/RDH	Rec Navaid	Navigation Specification
IF	INGIS	-	-	-	-	-	-	-	-	RNAV 1
TF	KN651	-	306°(311.4°)	6.1	-	+5000	-	-	-	RNAV 1
TF	KN650	-	008°(013.2°)	6.0	-	+2100	-230	-	-	RNAV 1
TF	KN501	-	288°(293.2°)	5.0	-	+2100	-	-	-	RNAV 1

STAR instruction: INGIS – KN651 (5000 ft or above) – KN650 (max IAS 230 kt, 2100 ft or above) – KN501 (2100 ft or above)

NILUG 2D

Path Desc	Waypoint Identifier	Fly-over	Course °M(°T)	Dist (NM)	Turn Dir	Altitude	Speed	VPA/RDH	Rec Navaid	Navigation Specification
IF	NILUG	-	-	-	-	-	-	-	-	RNAV 1
TF	REMBO	-	266°(270.6°)	15.9	-	+3500	-230	-	-	RNAV 1
TF	KN501	-	258°(263.2°)	5.0	-	+2100	-	-	-	RNAV 1

STAR instruction: NILUG – REMBO (max IAS 230 kt, 3500 ft or above) – KN501 (2100 ft or above)

PELUP 2T

Path Desc	Waypoint Identifier	Fly-over	Course °M(°T)	Dist (NM)	Turn Dir	Altitude	Speed	VPA/RDH	Rec Navaid	Navigation Specification
IF	PELUP	-	-	-	-	-	-	-	-	RNAV 1
TF	KN822	-	034°(038.6°)	13.0	-	-	-	-	-	RNAV 1
TF	KN652	-	048°(052.8°)	15.3	-	-	-	-	-	RNAV 1
TF	KN651	-	048°(053.1°)	7.7	-	+5000	-	-	-	RNAV 1
TF	KN650	-	008°(013.2°)	6.0	-	+2100	-230	-	-	RNAV 1
TF	KN501	-	288°(293.2°)	5.0	-	+2100	-	-	-	RNAV 1

STAR instruction: PELUP – KN822 – KN652 – KN651(5000 ft or above) – KN650 (max IAS 230 kt, 2100 ft or above) – KN501 (2100 ft or above)